



Inmedius Spectrum v6.1 Feature Enhancements



Issue 4.2 Support, New Group Permission Model & Strengthened Security

This highlight sheet briefly describes and illustrates major new features and enhancements developed since the **Inmedius Spectrum™** v6.0 software launch in the early spring of 2017. The v6.1 release introduces support for Issue 4.2 of the S1000D Specification, a new permission model for significant flexibility in setting user roles, and includes ongoing enhancements to strengthen security.

Inmedius Spectrum enables enterprise-level installations with significantly enhanced system performance, security and resource optimization capacities. The browser-based, scalable architecture facilitates management, authoring and publishing of technical data, with capabilities to support multiple aircraft and other equipment programs with very large data sets. The **Inmedius® S1000D Publishing Suite™** leverages that architecture, offering an end-to-end solution to support the entire S1000D technical documentation lifecycle.

Integrated Issue 4.2 Support Added for S1000D Projects, Programs

The software has been updated to support S1000D Issue 4.2 requirements for **Inmedius® S1000Dmanager™**, **Inmedius® S1000DauthorPro™**, **Inmedius® S1000DauthorPro™ XE**, **Inmedius® S1000Dprism™**, **Inmedius® S1000Dreview™**, **Inmedius® S1000Dpublisher™**, **Inmedius Advisor®**. Issue 4.2 support encompasses the same Data Modules supported by the system for Issue 4.1 compliance.

New Group Permission Model Adds Significant Flexibility for Setting User Roles

Inmedius Spectrum v6.1 new group permission settings allow for much more granularity and flexibility in establishing and managing user roles. A new framework includes a built-in administrator account, with access to administration functions from **S1000Dmanager's** Main Menu. This streamlines the process of managing permissions.

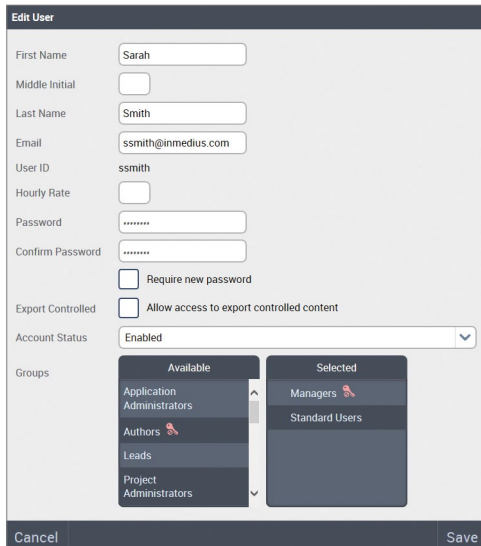
| S1000Dmanager Administration | | | | | |
|------------------------------|-------------|---------|---------------------|---|-----------|
| Users | Name ^ | User ID | Email | Status | Functions |
| Groups | Ann D'min | admin | admin@inmedius.com | f - | ... |
| Server Configuration | John Doe | JDoe | JDoe@inmedius.com | | ... |
| Server Cleanup | Sarah Smith | ssmith | ssmith@inmedius.com | | ... |
| Send Log Files | | | | | |
| Support Utilities | | | | | |

Ann D'min

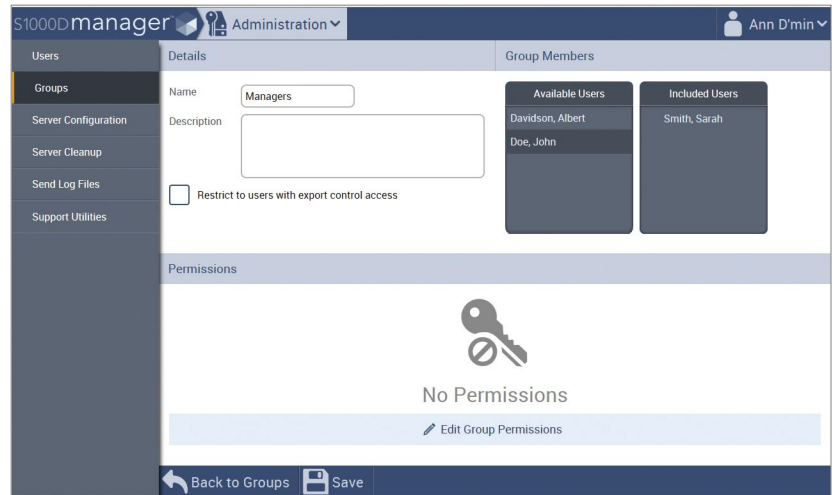
Add User

A new Administration tab streamlines permissions management.

These group permission settings replace access levels in previous versions of **Manager**. For those upgrading to v6.1, **Manager** will create groups that are equivalent to preexisting access levels. There will be no need to make any changes. Modifications are easily made and managed with v6.1, including the ability to add or remove group permissions.

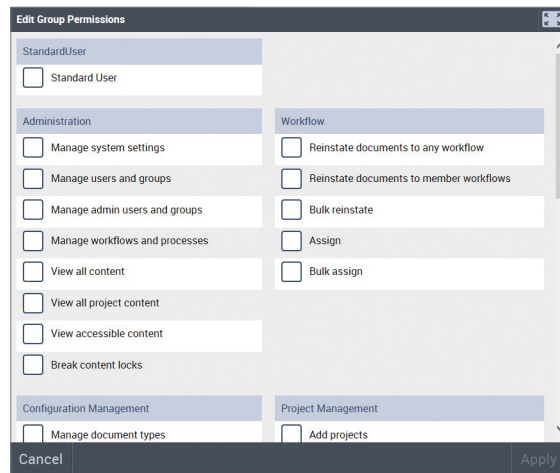


The Edit User screen has been modernized and streamlined in the v6.1 release.

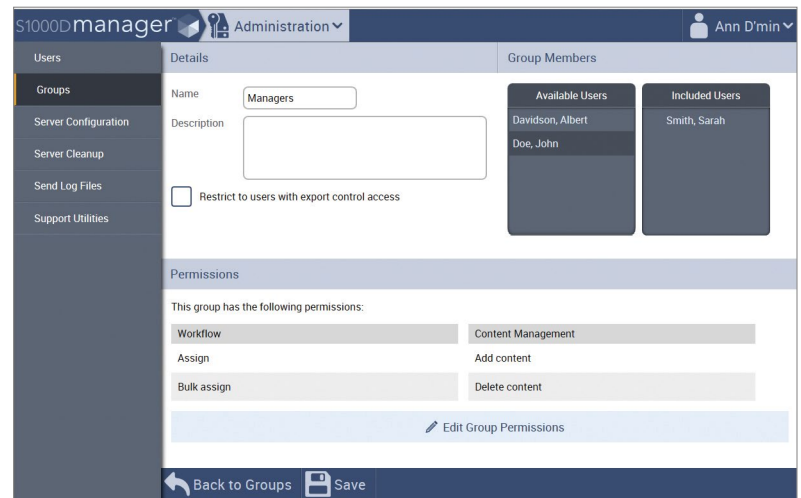


Create groups and add group members in the modernized Group Screen.

In addition to a Standard User permission setting, individual administrative, content management, workflow, configuration management, project management, S1000D, and other permissions allow for better, more detailed access control.



Group permissions are defined or edited in granular detail.



Once the permission settings are saved, group members and permissions are viewable.

Changes, Enhancements to Continually Strengthen System Security

As part of CDG's ongoing development effort to secure system resources and operations, a number of new data security enhancements have been made in Inmedius Spectrum v6.1. These updates include changes consistent with industry standards, such as the National Institute for Standards and Technology (NIST) and Federal Information Processing Standards (FIPS).

Modernized Interface Enhancements Promote Ease of Use

With new permission and security features, a number of screens have been modernized. These and other ongoing changes promote usability, streamline processes, and enhance productivity.

Other Enhancements, Compatibility, Notes

- Support added for Web Browser: Mozilla® Firefox® (on Windows)
- Inactive Session Termination Timeout added for **S1000Dmanager**, **S1000Dprism**, **S1000Dreview** & **S1000DauthorPro XE** (includes automatic storage of the document draft on an interval basis)

*S1000D is a specification of the Aerospace and Defense Industries Association of Europe.
Companies mentioned do not imply endorsement.*