

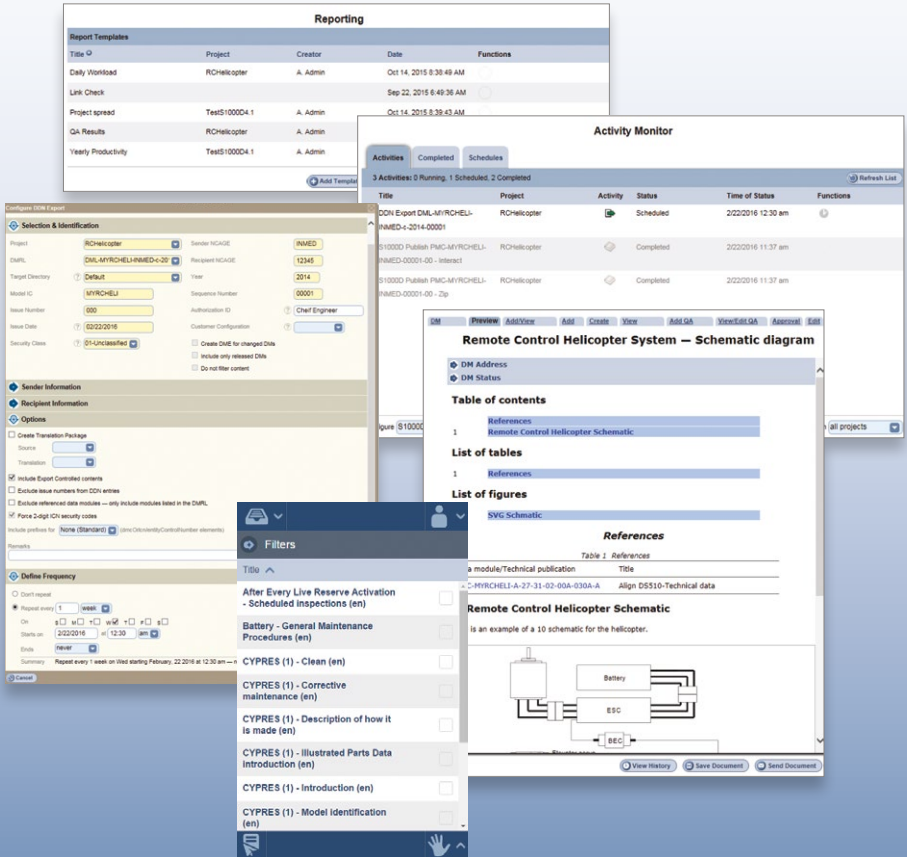


Inmedius® S1000Dmanager™





inmedius[®]
S1000D manager™



Reporting

Title	Project	Creator	Date	Functions
Daily Workload	RCHelicopter	A. Admin	Oct 14, 2015 8:38:49 AM	
Link Check			Sep 22, 2015 8:49:36 AM	
Project spread	TestS1000D4.1	A. Admin	Oct 14, 2015 8:38:43 AM	
QA Results	RCHelicopter	A. Admin		
Yearly Productivity	TestS1000D4.1	A. Admin		

Activity Monitor

Title	Project	Activity	Status	Time of Status	Functions
DDN Export DMLA-MYRCHHEL-ANMED-4-2014-00001	RCHelicopter		Scheduled	2022016 12:30 am	
S1000D Publish PMAC-MYRCHHEL-ANMED-00001-00 - Interact	RCHelicopter		Completed	2022016 11:37 am	
S1000D Publish PMAC-MYRCHHEL-ANMED-00001-00 - Zip	RCHelicopter		Completed	2022016 11:37 am	

Configure DM Export

Selection & Identification

Project: RCHelicopter
 DMRL: DMLA-MYRCHHEL-ANMED-4-2014-00001
 Target Directory: Default
 Model ID: MYRCHHEL
 Issue Number: 000
 Issue Date: 02-22-2016
 Security Class: UNclassified

Sender Information

Sender HCAGE: INMED
 Recipient HCAGE: 12345
 Year: 2014
 Sequence Number: 00001
 Authentication ID: Chief Engineer

Options

Create Translation Package
 Include Export Controlled contents
 Exclude Issue numbers from CDN entries
 Exclude referenced data modules -- only include modules listed in the DMPL
 Force 2-digit ICA security codes
 Include prefixes for: None (Standard)

Define Frequency

Repeat every: 1 week
 Starts on: 2022016 at 12:30 am
 Ends: never

Filters

After Every Live Reserve Activation - Scheduled inspections (en)
 Battery - General Maintenance Procedures (en)
 CYPRES (1) - Clean (en)
 CYPRES (1) - Corrective maintenance (en)
 CYPRES (1) - Description of how it is made (en)
 CYPRES (1) - Illustrated Parts Data Introduction (en)
 CYPRES (1) - Introduction (en)
 CYPRES (1) - Model Identification (en)

Remote Control Helicopter System - Schematic diagram

DM Address
 DM Status

Table of contents

- 1 References
- 1 Remote Control Helicopter Schematic

List of tables

- 1 References

List of figures

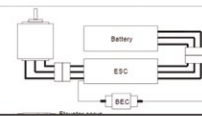
- 1 SVC Schematic

References

Table 1	References
a module/Technical publication	Title
- MYRCHHEL-A-27-31-02-00A-030A-A	Align D5510-Technical data

Remote Control Helicopter Schematic

is an example of a 10 schematic for the helicopter.



View History Save Document Send Document

S1000Dmanager provides a framework for controlling the creation of technical data utilizing specific DM, DMRL, ICN and security settings, in addition to managing workflow and project status

Comprehensive S1000D Project Setup and Management Support

Inmedius S1000Dmanager simplifies the complex task of implementing the S1000D Common Source Database (CSDB) and provides essential project management capabilities. It extends the functionality of a Content Management System (CMS) to include S1000D project setup and management capabilities in one central location.

Manage the complete technical documentation process

Manager and the integrated Inmedius® S1000D Publishing Suite™ offer a complete, end-to-end solution to successfully manage the technical documentation publication process. These performance-oriented applications create, organize and distribute data and technical information assets, supporting the entire S1000D documentation lifecycle.

Manager leverages the newly developed Inmedius Spectrum™ architecture, designed to enable enterprise-level installations. A new, modernized user interface also enables quick and easy navigation through large volumes of data.

Key Benefits

- Enables easy setup and management for S1000D projects
- Manage access and control multiple projects across global teams
- Integration with Microsoft® Project and Excel supports project schedule development and cost analysis
- Workflow, auditing and customized reporting tools provide project management visibility and insight
- Quality assurance and validation support checks to monitor compliance with S1000D and customized business rules throughout product lifecycle

S1000D Document Creation

S1000D Project Management

- Data Module definition
- Create/manage Information Control Numbers (ICN) and Data Module Codes (DMC)
- Track Data Management Requirement Lists (DMRL)
- Define and maintain project configurations
- Business Rules Exchange (BREX) allows project configuration sharing
- Key functions accessible directly from Inbox and Documents screen

Document Storage & Structured S1000D Data Viewing

- SNS structures stored/edited separately
- Information codes mapped to Data Module (DM) type

Workflow Capabilities

- Workflow technology, version control and commenting capabilities ensures compliance with business standards

User Controlled Project Access & Privileges

- Manage and control projects for globally separated teams
- Multiple level security and access controls on shared projects
- Document access based on user viewing rights authorization

Applicability Management

- Applicability and effectivity management support for S1000D Issue 1.9 through 2.3
- Applicability management support for S1000D Issue 3.0 through 4.1
- Built-in Applicability Editor ensures compliance with Project Applicability Cross-Reference Table (ACT) and Condition Cross-Reference Table (CCT)

Customer Configuration Management and Filtered Publishing

- Customized data sets –
 - organize applicability Data Module Extension (DME), products and languages

Data Module and Document Editing Management

Manager, together with Inmedius® S1000DauthorPro™ and Inmedius® S1000DauthorPro™ XE, supports editing and management requirements in the S1000D specification. Management functions are provided for all S1000D objects including Data Modules (DMs), Publication Modules (PMs), Illustrations, Data Management Requirements Lists (DMRLs), and SNS. Legacy versions (back to Issue 1.6) of S1000D are also supported.

Manager provides a number of features and capabilities to streamline S1000D document management. Features include:

- Store, manage, retrieve S1000D objects across multiple projects
- Easy tracking, security controls and quality assurance
- Expanded search/filter capabilities for multiple criteria
- Preview formatted Data Modules

Publication Modules & Publishing

- Manage all Publication Modules (PMs) for each project
- Extract/synchronize PM for DMRLs

- Store and control applicability and effectivity information
- Integrated for export to Inmedius® S1000Dprism™, Inmedius® S1000Dreview™, and Inmedius® S1000Dpublisher™

Integrated PDF Publishing

- Publish directly to PDF using integrated S1000Dpublisher
- Specify/output multiple formats in one publish cycle
- Upload customization sets to produce user-specific output

Data Module Requirements Lists

- DMRLs managed as separate documents –
 - easily create, merge, revise, import or remove as needed
- Check out, issue, approve DMRLs with their own workflow
- Controls include Issue numbers/dates, quality assurance and workflow status
- Project-wide DMRL and all related documents available in Project Library
- Generate CSDB status lists

Reporting & Audit Trails

Dashboard Reporting

- Centralized Inmedius Dashboard provides visual representation of complete S1000D technical documentation process
- Key metrics enable project efficiency monitoring, identifying problems
- Essential project monitoring tools to help ensure on time, on budget deliveries

Custom Reporting

- Import report templates created by Jaspersoft® Reporting engine
- Interactive data compiled from multiple sources
- Custom reports stored in Manager repository

Microsoft® Project & Excel Integration

- Schedule definition and maintenance
- Cost analysis with user-defined spreadsheets

Time-Stamped Audit Trails

- Tracking through entire check-out, editing process

Validation Support

- Quality Assurance check of DM on check-in or import
- Layered BREX support at multiple levels in hierarchy
- Errors, non-compliance with S1000D easily identified
- Can be integrated with Inmedius® Advisor™ to ensure strict enforcement of organizational rules

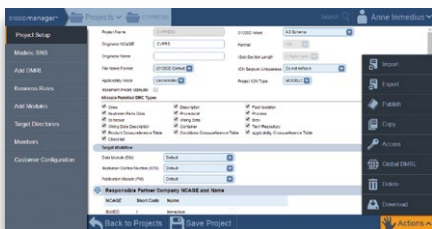


inmedius[®] S1000D manager[™]

Key Features

S1000D Project Management

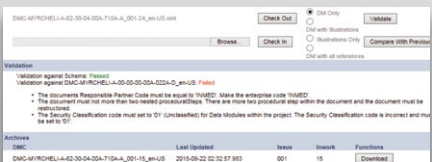
Control the development and publishing of S1000D technical data with extensive management features



Step through the process of creating and managing S1000D content by following logical function groupings organized by tabs in the Project layout

Data Module Schema & Business Rules Validation

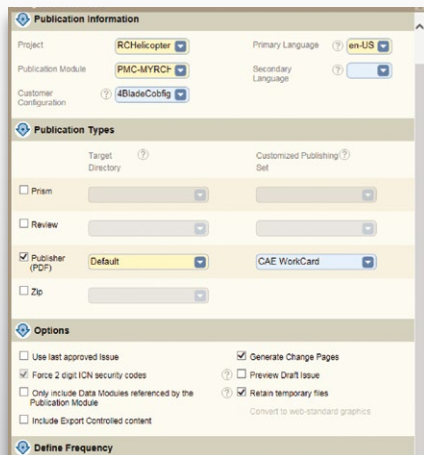
Maintain the integrity of all technical content in a central repository



Conduct a quick validation against business rules before sending DMs through the Quality Assurance Workflow

Integrated Publishing

Publish to multiple output formats directly from the S1000D CSDB, including IETM, PDF, DDN and ZIP



Create and schedule multiple Publication Types (in any combination) directly from Manager



inmedius[®]

S1000D Publishing Suite™



The Inmedius® S1000D Publishing Suite™ offers an end-to-end solution to support the entire S1000D documentation lifecycle. These integrated applications create, organize and distribute data and technical information assets in a performance-oriented environment.

Inmedius Spectrum™ Architecture

Manager v6.0 leverages the newly developed Inmedius Spectrum™ architecture, designed to enable enterprise-level installations with significantly enhanced system performance, security and resource optimization capabilities. Inmedius Spectrum provides a browser-based, scalable architecture that facilitates management, authoring, and publishing of technical data, with capabilities to support multiple aircraft and other commercial and defense equipment programs with very large data sets. Inmedius Spectrum also enables deployment in a cloud-based environment if required.

Other Services provided by CDG

Technical Publications

Authoring & Software

- Aviation technical publications
- S1000D, ATA, numerous military specs
- Inmedius® software

Engineering Learning Media Solutions

- eLearning Content Development
- 3D Modeling and Simulation
- Focus on Equipment Operations and Maintenance

Integrated Design &

Certification Services

- EASA.21J.536 Design Organisation Approval
- Aircraft Interiors Engineering Design
- Major and Minor Change Approvals

Corporate Headquarters

Building 801, 5th Floor
4060 N. Lakewood Blvd
Long Beach, CA 90808
+1 562 608 2000

European Head Office

First Floor, Building 1
Albany Place
Welwyn Garden City, Hertfordshire AL7 3BG
+44 (0) 1707 367700

www.cdgnow.com
sales@cdgnow.com

The statements contained herein are based on good faith assumptions and provided for general information purposes only. These statements do not constitute an offer, promise, warranty or guarantee of performance. Actual results may vary depending on certain events or conditions. This document should not be used or relied upon for any purpose other than that intended by CDG.