



Data Renaissance Suite™





The Data Renaissance Suite™ (DRS) is a suite of software tools designed to lower the life cycle cost of maintenance activities and associated technical data for mission-critical complex equipment and systems.

The world-class capabilities of Data Renaissance Suite™ have been demonstrated through award-winning deployments of Interactive Electronic Technical Manuals (IETMs) for a number of US and foreign military equipment programs. DRS is fully adaptable to accommodate technical data requirements for commercial, non-military equipment as well.

Data Renaissance Suite™ provides:

- A technical authoring environment supporting distribution of IETMs with customized data views based on equipment configuration and user-specific criteria.
- Dynamic linking of technical data elements with related information, such as parts information, training materials, supplemental texts, graphic elements, and tool tips.
- Integration and linking to other related maintenance and engineering applications.

DRS offers sophisticated equipment maintenance troubleshooting tools, including:

- Interactive, step-by-step troubleshooting support guides for maintenance personnel.
- Automated tools to gather electronic fault and system state data from embedded software on equipment. This data is combined with information entered by a user to help isolate components requiring service.
- Audit trails and metrics reporting to track maintenance actions and equipment reliability.

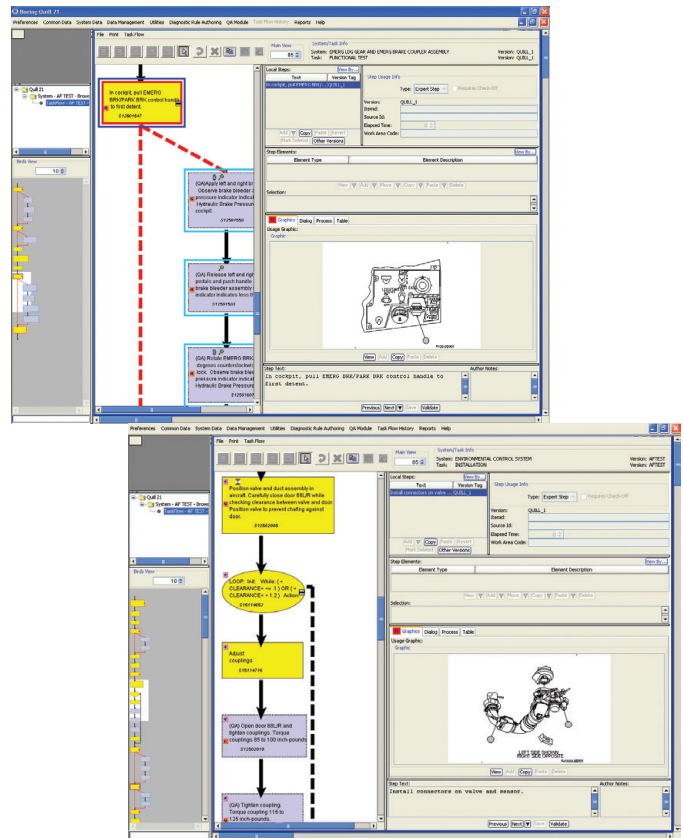
Quill 21™ IETM Authoring System

Quill 21™ is an authoring system for Type II, Class IV Interactive Electronic Technical Manuals (IETMs). It consists of three main components: an authoring system, a centralized content database, and a presentation/viewer system.

Quill 21™ offers enriched features, such as:

- Template-based forms and menu-driven selections; no original SGML or XML authoring is required.
- Quill Task Flow Editor - a graphical tool that authors can use to create step-by-step flowcharts for each maintenance task.

- Intelligent graphics can be linked to any object, including tasks, steps, parts, descriptive information, other graphics, etc. Training videos can also be included and linked to related content.
- “Hotspotting” capabilities can be added to illustration files generated from engineering CAD systems.
- Extremely scalable – Quill 21™ has successfully handled more than 60 concurrent users authoring into the same IETM database.

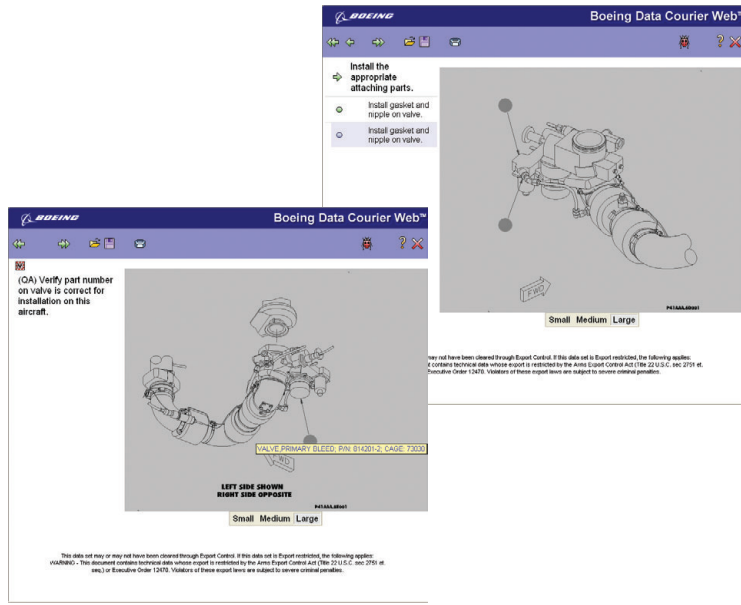


S1000D™ Support

Quill 21™ provides an option to export IETM data in compliance with the S1000D™ Issue 3.0 specification. Existing task and descriptive information content can be extended to include data specific to the S1000D™ specification, providing an easy migration path from the MIL-PRF-87269A specification to S1000D™. This supports requirements to deliver content in compliance with both specifications, and also supports any requirements to transition content from 87269 to S1000D. Quill 21™ provides a strong authoring platform for the interactive electronic “Type II” content found in the S1000D™ Process Data Module, especially for complex systems.

Data Courier Web™ Presentation System

Data Courier Web™ is the presentation system for electronic technical manuals authored in Quill 21™.



Some of the capabilities supported by Data Courier include:

- Deployment of IETMs for use in the field via laptop computers or ruggedized portable PCs.
- Multiple types of information associated with a single task or procedure (such as pin arrangement graphics, parts listings, and locator graphics) are assembled dynamically “on-the-fly” based on criteria entered by the user. All related information is displayed simultaneously in side-by-side presentation panes.
- Users navigate through data either at an expert level, or with more detailed step-by-step instructions for a novice level user.
- Graphics system stores extensive information with limited memory space required. Supports any type of multimedia file compatible with the host computer.

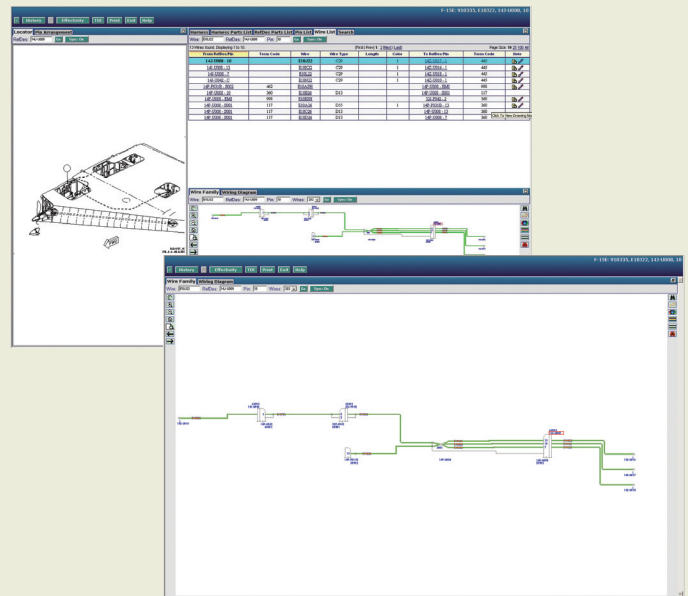
Wiring Illuminator Web™

Wiring Illuminator Web™ is a digital wiring data system tool that significantly reduces the time, effort and associated cost of troubleshooting complex wiring. A wide variety of information from wiring diagrams and wiring manuals can be captured in a centralized database and dynamically displayed within Wiring Illuminator Web™ as a single integrated source of wiring data.

Some of the features supported by Wiring Illuminator Web™ include:

- Dynamic wiring diagrams and other content is created “on-the-fly” from the wiring database based on specific equipment identifiers and other criteria entered by the user.

- Information is filtered based on the configuration of the equipment being serviced. Technicians only see information relevant to the job at hand - no need to sift through multi-page foldouts and try to interpret complex system configuration information.
- Data is formatted and displayed in any combination of wiring diagram, pin listing and/or wire listing. Information is displayed simultaneously in side-by-side presentation panes. Both dynamically-generated and static content can be displayed together on the same viewer screen.
- Wiring Illuminator Web™ can be a stand-alone application or integrated with other applications in the maintenance environment. For example, it supports links to external centralized maintenance management systems to extract configuration and optional equipment information.



Intelligent Graphics

Information from static schematics or wiring diagrams is “mined” to produce intelligent vector graphics used in Wiring Illuminator Web™. The Wiring Illuminator Web™ database utilizes extensive links to these intelligent graphics, providing powerful capabilities:

- Circuit tracing is provided; selecting a wire or other component in the graphic causes its entire signal path to be visually highlighted. It also triggers a dynamic update of other data views to reflect the selection.
- Active components, such as switches and circuit breakers, operate just like the physical components they represent.
- Customized data services are available, including development of training animations for repair and assembly processes.

Other Advanced DRS Utilities

Web Configuration Management (WCM) Tool

The Web Configuration Manager (WCM) tool provides a centrally controlled location for tracking configuration, user, and squadron or fleet information. This information is entered and managed via a web user interface that can be configured to suit the customer definition of data, and can be used by all of the DRS tools in either a networked or stand-alone environment.

Annotation Tool

The DRS Annotation Tool provides a common tool for annotating technical data across the entire DRS Suite. Integration of this tool facilitates several different options for including notes and annotations, including:

- Personal annotations or notes created by individual users of the IETM
- Feedback communication notes sent from users back to the authors of the technical data, indicating any defects or recommended changes to the IETM
- High priority bulletins or other information that needs to be distributed in between IETM data revision cycles

The Annotation Tool also provides:

- Basic workflow functionality to facilitate approval of annotations
- "Viewing rights" control of annotations; annotations are displayed or hidden based on individual user profiles
- Synchronization of annotations between a central IETM server and client platforms running the IETM
- "Configurable" annotations that can be linked to specific types of tasks in the IETM one time, and then used repeatedly wherever that task category appears

A New Approach to Technical Data

The Data Renaissance Suite™ was designed as a fresh approach to make better use of existing technical data across the entire organization.

DRS is one of the few comprehensive technical data management solutions available today that enables technical data to flow from its inception in the engineering department, through the technical authoring process, and ultimately to the end users of the data itself.

DRS also facilitates interactive exchange communications between the authors and end users of technical data related to identified equipment faults, troubleshooting information, and technical publications update requests.

Contact us today to find out how Data Renaissance Suite™ can revitalize your technical data management and maintenance processes.

Visit www.cdgnow.com or write to us at marketing@cdgnow.com.



www.cdgnow.com

© CDG